

INKCUPS

REVOLUTION: DIGITAL CYLINDER PRINTER



REVOLUTION
DIGITAL CYLINDER PRINTER

www.inkcups.com

WHY INKCUPS?

Elevate your decorating capabilities with a company that is recognized for having the most innovative machines in the industry. Work with application specialists that can consult you on your printing needs from start to finish. Rest assured that a full team of over 50 dedicated digital service professionals are there to support you, globally.

DIRECT SALES OFFICES

United States: MA, NY, GA, IA, CA

International: Canada, China, Germany, Guatemala, Honduras,
Hong Kong, Mexico, Vietnam

info@inkcups.com | 978.646.8980

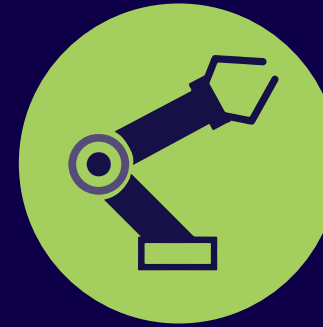
WWW.INKCUPS.COM



Standard Features

- Ⓢ Patented helical image engine
- Ⓢ 15-minute changeover
- Ⓢ Integrated vacuum tooling
- Ⓢ Integrated deionizer
- Ⓢ Varnish is standard
- Ⓢ Small footprint

Number of Tooling Fixtures	12
Part Diameter	63.5mm - 115mm (2.5" - 4.5")
Part Length	76mm - 305mm (3" - 12")
Maximum Print Length	Standard: Up to 108mm (4.25") Upgrade: Up to 220mm (8.66")
Maximum Taper Angle	10°
Standard Resolution	702dpi x 900dpi
Lamp Style	8W LED for pin cure & for final cure
Ink Configuration	CMYKWWVV
Ink Type	UV/LED
Bulk Ink System	3 Liters
Dimensions	2724mm x 1200mm x 1883mm (107" x 47" x 74")
Voltage	3 Phase 380/220 VAC and Single Phase 220 VAC @ 8 AMP



AUTOMATIC HANDLING

Integrate automation for a complete solution.



SEAMLESS GRAPHICS

Smooth images without stitching or lines.



PRODUCTION QUEUE

Setup and automatically run next production job.

POPULAR APPLICATIONS:

STADIUM CUPS • STAINLESS TUMBLERS • PINT GLASSES • COSMETIC JARS • SPORTS BOTTLES



FEATURES



SINGLE PRINT STATION FOR COLOR

Printing CMYK all at the same station yields consistent, highly accurate dot placement and excellent print quality and color reproduction. Other printers use 1 print station for each color – compromising image quality and color due to mechanical tolerance and registration variations.



AUTOMATIC PRE-TREATMENT

The Revolution is equipped with an integrated flame, corona or plasma treatment system to ensure the products are pretreated uniformly and consistently to achieve the best adhesion in the industry.

SERVO DRIVEN ANGLE ADJUSTMENT

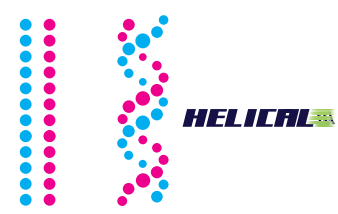
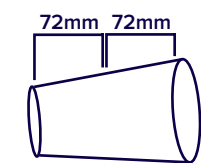
For conical shaped containers the machine learns the precise angle of the part and stores it for future usage. The print head assembly moves along the taper in an XY motion maintaining the critical gap between the nozzles and the printed surface.



COMPARISON: THE REVOLUTION HELICAL PRINTING VS. SINGLE PASS PRINTING

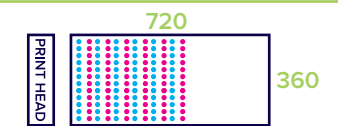
LONG IMAGES

Helical printing enables printing of long images in a single motion, unlike single pass printing which requires stitching (a second pass which leaves a line in the print) for any image over the size of the print head (typically 72mm).



INTERLACING

Helical printing interlaces the inkjet drops, smoothing out band lines and promoting uniform coverage. With single pass printing, if just one nozzle is out, a visible line of missing ink will appear running through the image.



AUTOMATIC LOAD/UNLOAD

Parts are automatically loaded onto the vacuum mandrels from an adjustable indexing conveyor and unloaded onto an exit conveyor. Productivity is improved because the machine is not reliant on the operator. They can be doing other higher value operation.

